



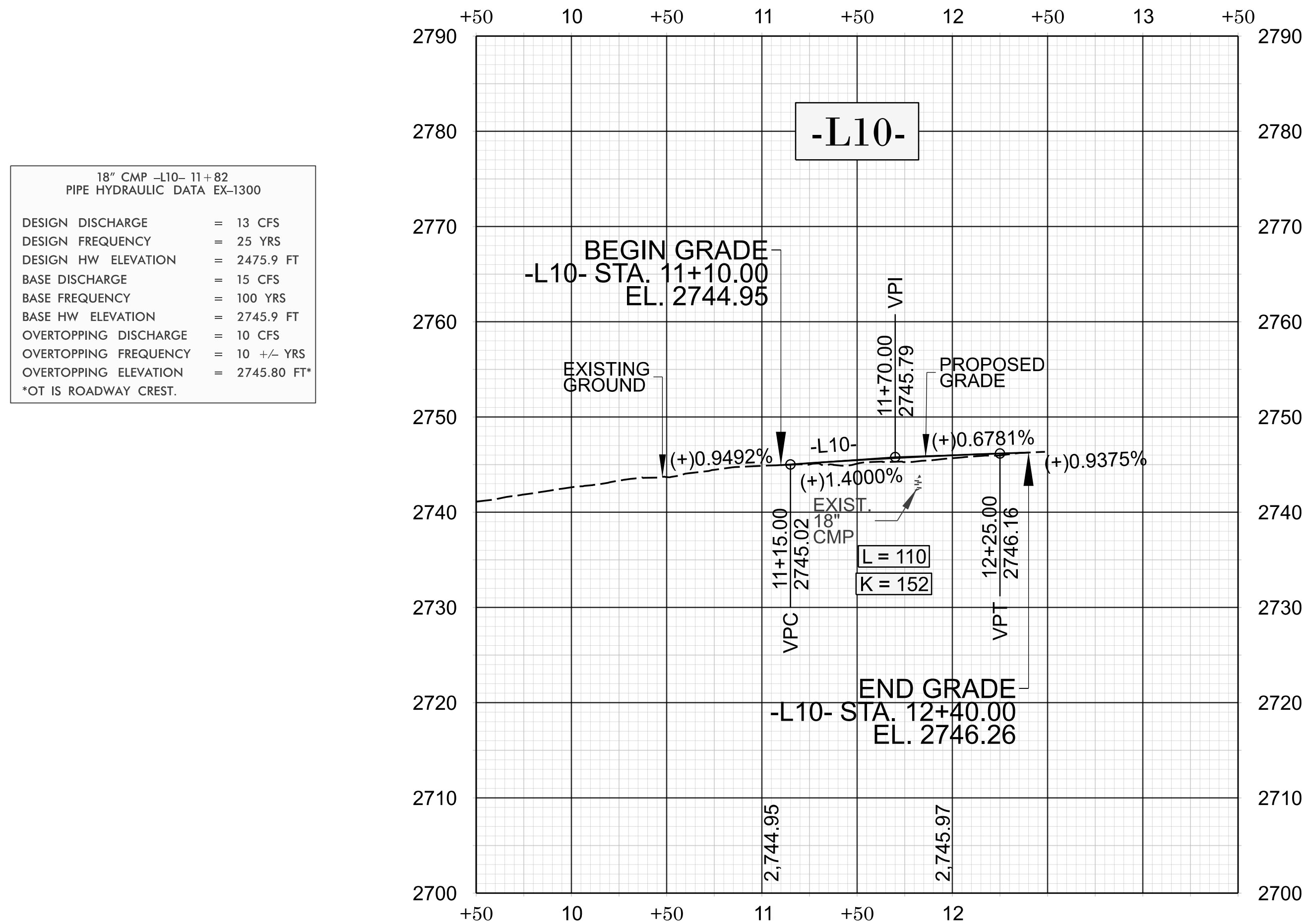
<u>CUR DATA -L10-</u>	<u>CUR DATA -L10-</u>
Plc 10+53.89	Plc 11+97.21
$\Delta c = 31^{\circ}49'53.2''$ (LT)	$\Delta c = 28^{\circ}05'27.5''$ (RT)
D = 30°18'54.8"	D = 26°46'25.4"
Lc = 105.00	Lc = 104.92
Tc = 53.89	Tc = 53.54
R = 189	R = 214
SE = EXIST.	SE = EXIST.
RO = N/A	RO = N/A

**BEGIN CONSTRUCTION**  
**DF18314.2045067**  
**-L10- STA 11+10.00**

**END CONSTRUCTION**  
**DF18314.2045067**  
**-L10- STA 12+40.00**

NOTES:  
SEE SHEET NO. 2G-10 FOR GEOTECH DETAILS.

BALD ROCK ROAD (SR1710) SHALL BE RECONSTRUCTED UTILIZING THE EXISTING SECONDARY ROAD AGREEMENTS ALREADY IN PLACE EXCEPT WHERE PROPOSED RIGHT OF WAY AND EASEMENTS ARE SHOWN ON THE PLANS.

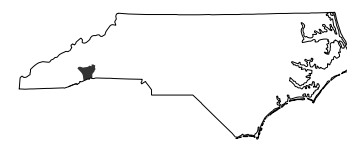


18" CMP -110- 11+82	
PIPE HYDRAULIC DATA EX-1300	
DESIGN DISCHARGE	= 13 CFS
DESIGN FREQUENCY	= 25 YRS
DESIGN HW ELEVATION	= 2475.9 FT
BASE DISCHARGE	= 15 CFS
BASE FREQUENCY	= 100 YRS
BASE HW ELEVATION	= 2745.9 FT
OVERTOPPING DISCHARGE	= 10 CFS
OVERTOPPING FREQUENCY	= 10 +/- YRS
OVERTOPPING ELEVATION	= 2745.80 FT*
*OT IS ROADWAY CREST.	

DF18314.  
2045067

FINAL	13
-------	----

NORTH CAROLINA  
DEPARTMENT OF TRANSPORTATION  
HENDERSON COUNTY



HIGHWAY DIVISION 14

ROADWAY DESIGN  
ENGINEER

7/29/2025

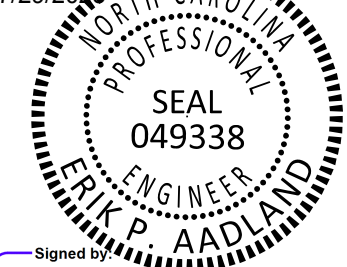


Signed by:

Nikki Honeycutt

HYDRAULICS

7/29/2025 TH CARO



Signed by: \_\_\_\_\_

Erik P. Radland  
1E1005624RDE401

PREPARED BY



# KCA



**KCS**  
KISINGER CAMPO  
& ASSOCIATES

NC FIRM LICENSE No: C-1506  
301 Fayetteville St.,  
Suite 1500  
Raleigh, NC 27601  
(919)882-7839

REVISIONS